



20 years of  
Excellence

*Pride in our past...building our future.*

The Center of Excellence for Poultry Science



**UofA** **DIVISION OF AGRICULTURE**  
**RESEARCH & EXTENSION**  
*University of Arkansas System*



## *The Center of Excellence for Poultry Science*

---

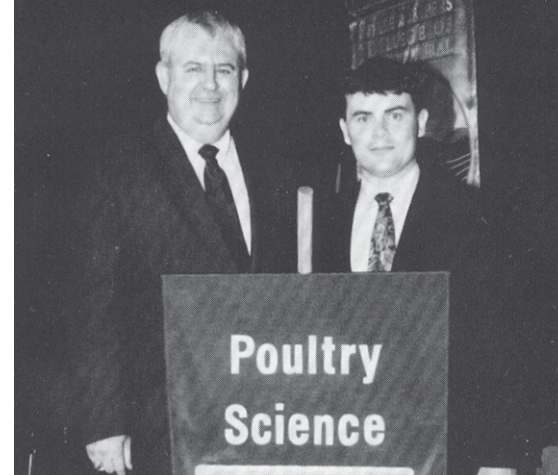
- Letter from the Director, page 3
- Mission, Vision, Goals, page 3
- Building the building, page 4-5
- Facilities, page 6-7
- Contributors to the Building Fund, page 8
- Directors for the Center of Excellence for Poultry Science, page 9



## *The Students*

---

- 20 Years of Poultry Science Department Graduates, pages 10-20
- Internships, page 21
- 2014-15 Undergraduate Scholarships, page 22
- Student Achievements, Awards and Honors, page 23
- Study Abroad - Community Development in Mozambique, Africa, page 23



## *The Faculty*

---

- 20 Years of Faculty Awards and Honors, page 24
- Emeritus, page 26
- Faculty, page 26-28
- USDA/ARS Faculty, page 29
- Peer-Reviewed Journal Articles, Books and Book Chapters (2014), page 30

## *Taking pride in our past...building our future.*

*“The University of Arkansas in Fayetteville is in the heart of the poultry industry. This industry not only proves to be a major reason for economic growth in northwest Arkansas, but also serves as a food source for the world as well.” These words comprised the first paragraph of the Center’s Annual Report in 1993. They still hold true today. The goals then, to make the Center operational, to hire high-quality faculty and to have the center promote even closer ties with industry through lab and research work, are all realized twenty years later. Even better, the Center continues to develop high-quality graduates who will meet the challenges of today’s world—feeding a rapidly growing world population. Our graduates use the knowledge gleaned from our past and build upon it for our future.*

*We hope you enjoy this glimpse of the past and the present.*



## Contact:

Michael Kidd, Center Director and Poultry Department Head, [mkidd@uark.edu](mailto:mkidd@uark.edu)

Robert Wideman, Associate Director of the Center, [rwideman@uark.edu](mailto:rwideman@uark.edu)

Dustan Clark, Associate Director - Extension, [fdclark@uark.edu](mailto:fdclark@uark.edu)

Billy Hargis, Director, John Kirkpatrick Skeeles Poultry Health Laboratory, [bhargis@uark.edu](mailto:bhargis@uark.edu)

Annie Donoghue, USDA-ARS Research Leader, [donoghue@uark.edu](mailto:donoghue@uark.edu)

Yvonne Vizzier Thaxton, Director, Center for Food Animal Wellbeing, [ythaxton@uark.edu](mailto:ythaxton@uark.edu)

Nick Anthony, Teaching Program Coordinator, [nanthony@uark.edu](mailto:nanthony@uark.edu)

Susan Watkins, Internship Program Coordinator, [swatkin@uark.edu](mailto:swatkin@uark.edu)

Gary Davis, Undergraduate Recruiter, [gddavis@uark.edu](mailto:gddavis@uark.edu)

Sara Landis, Communications Specialist, [slandis@uark.edu](mailto:slandis@uark.edu)

Tina Sexton, Fiscal Manager, [tls004@uark.edu](mailto:tls004@uark.edu)

Patrice Sims, Department Administrative Manager, [patrices@uark.edu](mailto:patrices@uark.edu)

## *Mission, Vision, Goals*

The Center of Excellence for Poultry Science shall provide comprehensive programs in research, teaching, and extension dedicated to improving the lives of Arkansans associated with all components of the poultry industry by generating knowledge through research and putting that knowledge to use through education.

The Center of Excellence for Poultry Science shall develop the knowledge and intellectual capacity to meet the specific needs of poultry production-processing-marketing firms to help them remain competitive in a global economy. The CEPS shall meet the needs of society regarding issues such as food safety and security, human nutrition, animal health and well-being, and environmental stewardship.

## *From Dr. Mike Kidd*

It is my privilege to provide this note to supplement the Center of Excellence for Poultry Science's 20th anniversary commemorative publication. And I am humbled to have had the honor to serve as center director the past five-plus years. The creation of the Center of Excellence for Poultry Science was a great accomplishment, coming at a time when 75% of poultry science departments at the country's land-grant universities had already been dissolved. And it's a testament to the collaboration of state and federal agencies with academia and industry to create an unsurpassed Division of Agriculture service center: student training, research impact, and information dissemination.

The 20th anniversary will be a tribute to the past, a highlight of the current students and programs, and a look to our future. In this world of consistent change, a reflection of past accomplishments is vital to prepare for the future, and it is a pleasure to highlight current faculty, staff, and student accomplishments. The faculty of the center have raised the bar for higher education linkages to work-force development and will continue to do so.

In the 2014-2015 academic year we graduated 30 undergraduates with bachelor's degrees (poultry science majors) and 15 graduate students (5 master's degrees and 10 doctoral degrees). Industry placement of the undergraduate students was half of the graduating class. Our recruitment and education programs are paramount to the center's viability. Hence, the Arkansas poultry industry, the poultry industry at large, and the world's food security will, in some way, depend on our students: their energy, knowledge, and leadership.

Twenty years of faculty honors are highlighted herein. They have molded our students into leaders and made this center what it is today. And their accomplishments and honors are stellar. The faculty achievements would not be possible without the determination and hard work of our staff. The behind-the-scenes dedication of our farm, laboratory, and support staff allows the center to meet its goals and expectations. The center will experience a significant faculty turnover the next few years. Many of these faculty can't be replaced, simply because they are the best in the world in their respective disciplines. Indeed, our hiring of future faculty will focus upon poultry industry student needs and research output expectations – thus creating a tough center challenge but also a great opportunity.

We must continue to recruit and train the best leaders going forward, coupled with providing relevant data to poultry producers and industry for application of short- and long-term needs. We must do our best to educate the public with regards to the poultry industries' sophistication and the constant efficiencies that stem from breeding and scientific advancements. It's tough for our farmers and industries to carry this load as they are the ones providing safe, affordable, and abundant food. Moreover, it's tough for United States consumers to be concerned about the former, because they've never known anything else. The United States poultry industry represents one of the most sophisticated supply chain management models in business. And our role in serving our industry goes well beyond improving efficiencies; we impact the economies and families of Arkansans, as well as citizens nationally and abroad. And our future impact abroad can't be underestimated, as the exponential growth of poultry production and consumption in the developing world will require our scientific knowledge.

Mike Kidd, Director, Center of Excellence for Poultry Science; Department Head, Poultry Science Department

## *Building the building*

*Although the Department of Poultry Science was created in 1992 – the nation’s first new Poultry Science department since the 1950s – the University of Arkansas already had a long and proud tradition in Poultry Science research and education. Many industry leaders were trained by the faculty in the Department of Animal Science, which evolved into the two separate departments.*



In 1993 work had begun to secure funds for the Poultry Science Center, which was being called the “centerpiece for the Center of Excellence concept.” In 1989, the University of Arkansas Board of Trustees had designated Poultry Science as an academic program that would reach a peak of excellence in the university system. The state’s poultry industry and regulated utilities pledged \$5 million in 1990 to help fund improvements. The Arkansas College Savings Bond Programs accounted for another \$5 million and Senator Dale Bumpers secured \$10 million in federal grants to match the funds already given to the center. Senator Joe Yates left his legislative position in 1993, after serving in the Arkansas Senate since 1983, to accept the position of Director of Development at the Center of Excellence for Poultry Science. He had been

working on the concept of the Center since it was first dreamed up and had done quite a bit in the legislature to ensure that all the “ends met to get everything into place.” He relished the challenge of participating in the building of a world-known facility. As Director of Development he made sure that the necessary resources were obtained to get the center established and operational, and also worked on other fund-raising projects to raise an additional \$100,000 for the pilot processing plant.

The prospectus was that the center house modern, well-equipped laboratories and classrooms as well as science, business and consumer-oriented undergraduate and graduate degrees. The facility was slated to be operational in the spring of 1995.

University of Arkansas President B. Alan Sugg and the Board of Trustees approved a \$17,499,000 construction contract in February of 1993 for the Poultry Science Center and the pilot processing plant. At that time other Center of Excellence capital projects in operation or near completion included a \$2.7-million poultry health laboratory, and experimental feedmill (\$560,000), a poultry-rearing facility (\$280,000), and a \$1-million broiler energy verification project that included four commercial-scale broiler houses with computerized data-collection systems.



A Groundbreaking ceremony was held June 2, 1993 where Senator Dale Bumpers was the keynote speaker. Governor Jim Guy Tucker said Senator

Bumpers “literally made this project possible by his tireless work to find \$10 million in federal grants” for construction funds.



By the Summer of 1994 construction was far enough along for Governor Jim Guy Tucker to receive a “hard hat” tour of the 100,000-square-foot Poultry Science Center.

## *Building the building*

*Creation of the separate Poultry Science Department signified the major commitment by the University of Arkansas and the state to strengthen the public research and educational infrastructure needed to support the poultry industry (which provided more jobs and state tax revenue than any other Arkansas industry) through research, outreach and student placement.*



Approximately 1,000 people participated in the September 10, 1995 dedication ceremony. The ceremony included a called meeting of the UA Board of Trustees who voted to name the Center's main building in honor of poultry industry pioneer John W. Tyson, founder of Tyson Foods.

The park-like landscaping for the Center featured several varieties of maple trees and was designated the Maple Hill Collection of the UA Campus Arboretum. The landscaping was a cooperative effort by the University of Arkansas, the Arkansas Poultry Federation and Tyson Foods, Inc.

The five-story building was designed by Wisell, Evans and Rasco in association with Stone, Marraccini and Patterson (the fifth floor is the "mechanical penthouse" which houses the air handling systems). Construction was by Nabholz Construction Corporation.



*l to r: Bart Lindsey, UA Board of Trustees; Leland Tolleit, Tyson CEO; and Gov. Jim Guy Tucker admire the bust at the entrance to the Leland Tolleit Auditorium.*



## Facilities

Today, the “other Center of Excellence capital projects” are still operating and serving students, researchers and industry. **The hatchery** accommodates researchers conducting broiler breeder, quail, and chick quality research. **The FDA-licensed feed mill** is positioned to provide diets for poultry nutrition research, as well as common diets for poultry farm research trials with a variety of poultry. The feed mill serves all research faculty conducting applied or basic trials in need of feed, in addition to making feed for company research trials and multi-state collaborative research efforts. **The processing plant** serves researchers who obtain carcass parts yields as part of their protocols and contracts with industry entities in acquiring carcass and carcass parts yields for internal or university collaborative research trials.



### *The Hatchery*

- Four incubators (5,040 setting capacity; total setting capacity of 20,160)
- Two hatchers with a 5,040 hatch capacity
- Incubators and hatchers are regulated with PS 500 Jamesway controllers

The hatchery functions with sets on Tuesdays, transfers on Fridays and hatches on Tuesdays. Full capacity sets occur, but the hatchery typically runs with multiple sets with overlapping hatch dates to accommodate numerous faculty protocols.



### *The Feed Mill*

#### **Mixing**

- 2,000-vertical-pound mixer
- 1,000-pound ribbon mixer
- 500-pound mixer
- 250-pound double ribbon mixer
- 100-pound ribbon mixer
- 100-pound vertical mixer
- 50-pound tub mixer
- 50-pound vertical mixer

#### **Pelleting**

- Production pelleter: 2,000 pounds per hour
- Laboratory pelleter: 100 pounds per hour



### *The Processing Plant*

#### **Processing**

- 13-bird-per-minute processing line
- Mechanic and manual evisceration capabilities
- On-site incinerator

#### **Deboning**

- Hot carcass or chilled carcass manual deboning
- Electronic data capture (yields, food quality, and food safety data capture capabilities)

#### **Further Processing**

- Equipment includes oven, fryer, rotisserie, smokehouse, former, vacuum tumblers, injector, mixer/grinder, CO<sub>2</sub> mixer, bowl chopper, and slicer.



**The poultry research farm** is the foundation of our research efforts. It has been retrofitted for better energy utilization and for better commercial applicability of our research and serves both basic and applied researchers. **The Applied Broiler Research Unit (ABRU)** investigates energy use associated with LED lighting; dust emissions and the effect of rainfall runoff; behavior and vocalizations of broilers and their implications on animal wellbeing; the effect of litter manipulation on broiler production efficiencies; improvements in feed intake in broiler chicks; and methods to improve water quality and water intake in broilers. **The JKS Poultry Health Laboratory** is a modern research laboratory equipped with lab and poultry housing space suitable for containment of disease-causing agents of poultry within the US.



### *The John Kirkpatrick Skeeles Poultry Health Lab*

While the research focus areas of this laboratory are related to persistent and emerging major disease problems of the US poultry industry, the laboratory is capable of bio-containment of the highest level pathogens for poultry worldwide. This facility, first opened in the early 1990s, now houses approximately 20 scientists, staff, and graduate students, with laboratories and animal facilities equipped for all aspects of poultry disease research.

The JKS Poultry Health Laboratory is directed by Dr. Billy Hargis in coordination with Drs. Guillermo

(Memo) Tellez and Neil Pumford. The general focus of the laboratory is on new and cutting-edge interventions for persistent and emerging infectious poultry disease problems facing the US industry, with an emphasis on interventions that are sustainable in terms of cost, environmental impact, animal health and well-being, and consumer health and safety. The laboratory partners with scientists and veterinarians throughout the poultry industry and with several major research institutions worldwide with regard to emerging and persistent poultry disease threats.

### *The On-Campus Poultry Research Farm*

**Broiler Facilities**

- 8 houses ranging from 1,400-9,600 sq. feet
- 24-96 pens

**Broiler Breeder Facilities**

- 4 broiler breeder facilities ranging from 5,000 to 6,400 square feet
- 245 - 1,140 cages

**Battery Cage Facility**

- 4,000 square feet
- 12 batteries with 144 total cages
- Several other facilities are used for battery work with portable batteries

### *The Applied Broiler Research Unit - Savoy, AR*

- 5 flocks sold
- Averages for the 5 flocks: feed conversion - 1.782; age - 42 days; average weight - 5.868 pounds; pay/lb. - 5.9716; livability - 94.75%; condemnation - 0.79%; pay was \$128,963.16 or \$25, 792.63 per flock.

*Because the genetics of poultry (broilers, layers, and turkeys) improves every year and fewer universities are investing in farm infrastructure, we feel it is critical to improve and maintain our facilities as a research resource that provides results that are relevant to practice.*

# *The Building*

## *Building Fund*



Arkansas Power & Light Co.  
Arkansas Western Gas Co.  
Arkansas Louisiana Gas Co.  
Arkansas Electric Cooperative Corp.  
Arkansas Poultry Federation  
Armour Swift-Eckrich

Cal-Maine Foods Inc.  
Campbell Soup Co.  
Cargill, Inc.  
Cobb-Vantress, Inc.  
Con Agra Poultry Company  
Con Agra Frozen Foods

Darragh Company  
General Farm Services, Inc.  
George's, Inc.  
Hudson Foods, Inc.  
Kammerdiener Farms  
Keith Smith Company, Inc.

Koen Farms, Inc.  
Nest-Fresh, Inc.  
O.K. Industries, Inc.  
Peterson Farms Inc.  
Petit Jean Poultry  
Pilgrim's Pride Corp.

Simmons Foods, Inc.  
Southwest Energy Power Co.  
Townsend's, Inc.  
Tyson Foods, Inc.  
Wayne Farms

## *Equipment Fund*



### *Platinum*

International Paper  
Merck Company Foundation  
NewlyWeds Foods Inc.  
Novus International, Inc.  
Riceland Foods, Inc.

### *Gold*

American Cyanamid Company  
Baader North American Corp.  
Campbell Soup Co.  
Elanco  
Hoechst-Roussel Agri-Vet Company  
Kansas City Southern Railway  
Southwestern Bell Telephone, Little  
Rock

### *Silver*

Amoco Foundation Inc.  
Food Craft Equipment  
H.J. Baker & Bro., Inc.  
Kemin Industries, Incorporated  
Ledwell & Sons  
Nutra Blend Corporation  
Select Laboratories, Inc.

### *Partners*

Arbor Acres Farms, Inc.  
Arkansas Poly, Inc.  
ChickMaster Incubator Company  
F.P.E.C.  
Heartland Lysine, Inc.  
J.W. Nutt Co.  
Klenzade

Latco  
Marshall Minerals, Inc.  
Mead Corporation Foundation  
Zero Mountain, Inc.

### *Associates*

Agri-Bio Corporation  
BCE Technologies, Inc./Woodside  
Industries, Inc.  
Bird-In-Hand Farms, Inc.  
Brooks Grease Service, Inc.  
Chinook Group, Inc.  
Degussa Corp.  
East Texas Mack Sales, Incorporated  
F & H Food Equipment Co.  
Frost & Company  
G & M Animal Health Distributors,  
Inc.  
Sylvester C. Guist

Hatchrite Corporation  
Jamesway Incubator Company  
NWA Mack Trucks/Shibley Motors  
Pilgrim's Pride, Corp.  
Wilbur F. Feagan  
Woodson Tenet Laboratories, Inc.

### *Friends*

Alternative Designs  
Animal Health & Specialties  
Anitox, Corp.  
Arkansas Research Management, Inc.  
Bemis Company, Inc.  
California Pellet Mills, Inc.  
Christopher Butler  
Ciba-Geigy Corporation  
Embrex, Inc.  
Frez-N-Stor, Inc.  
Intralox, Inc.

KPMG Peat Marwick, L.L.P.  
Landmark Foods  
Northfield Freezing Systems, Inc.  
Philip Morris Management Corp.  
SunRay Services, Inc.  
Sunwest Industries  
The Dupps Company  
Tri-State Metal Works, Inc.  
U.S. Clip/Precitec Corporation  
Universal Sanitation Incorporated  
Viskase Corp.  
Weightech, Inc.

## *Directors of the Center of Excellence for Poultry Science - Past and Present*



*Dr. James H. Denton*

Dr. James H. Denton became the first Head of the University of Arkansas Department of Poultry Science and Director of the Center of Excellence for Poultry Science in July 1992.

Denton managed teaching, research and extension programs, with an emphasis on coordinating the interdisciplinary programs of the Center of Excellence. He also played a tremendous role in transforming the vision of the Center into a reality.

Prior to coming to the University of Arkansas, Denton was acting head of the Texas A&M poultry science department where he had served as Associate Department Head/Extension Program Leader.

Denton is a native of Stephenville, Texas. He has a B.S. in poultry science and M.S. and Ph.D. degrees in poultry products technology, all from Texas A & M University.

Denton retired in January 2002.



*Dr. Walter Bottje*

Dr. Walter Bottje, at that time associate director of the Center of Excellence, was named the Interim Department Head in December 2001.

Bottje graduated with honors in 1976, receiving a B.S. degree in

Zoology with a Chemistry minor from Eastern Illinois University. After receiving an M.S. from Southern Illinois University, he completed his Ph.D. at the University of Illinois prior to being hired at the University of Arkansas in 1985. At that time, Bottje had developed a research program focused on antioxidants and toxicology with an NIH grant he received in 1987.

Today Bottje's research focus is on the role mitochondria play in the phenotypic expression of feed efficiency in broilers, research supported by grants from USDA-NRI and Cobb-Vantress, Inc.



*Dr. Keith Lusby*

Dr. Keith Lusby was named the Interim Department Head for the Department of Poultry Science in 2008. He also filled the roll of Interim Center Director. At that time Lusby was serving as the Department Head of Animal Science.

A native of Prescott, Lusby has B.S. and M.S. degrees from Kansas State University and a doctorate (1974) in animal nutrition from Oklahoma State University. After two years at Louisiana State University, he joined the OSU faculty and was a professor of animal science there when he was appointed head of the University of Arkansas Department of Animal Science in 1995. Lusby retired from the University in 2011.



*Dr. Michael T. Kidd*

In January 2010, Michael T. Kidd was appointed Director of the Center of Excellence for Poultry Science and Head of the Department of Poultry Science.

Kidd was head of the poultry science department at Mississippi State University prior to starting his position at the Center of Excellence on January 25.

As center director, Kidd provides leadership for multidisciplinary research and extension programs in poultry science and related disciplines. As department

head, he is responsible for academic programs in poultry science within Dale Bumpers College of Agricultural, Food and Life Sciences.

At the time of his hiring, Dr. Milo Shult said, "I am confident that under Dr. Kidd's leadership, the Center of Excellence for Poultry Science and department of poultry science will continue to provide world-class research, teaching and extension programs."

A native of El Dorado, Kidd has bachelor's and master's degrees from the University of Arkansas in poultry science. His doctorate is from North Carolina State University, with a major concentration in nutrition and a minor in immunology.

After receiving his doctorate in 1994, Kidd became research manager at Nutri-Quest, Inc., in Chesterfield, Mo. He was promoted to research director in 1998 at Nutri-Quest. Kidd joined the Mississippi State faculty in 1999 and had headed the poultry science department there since 2007.



# 1995-1996

## 1995 Graduates

Meika Baer Bartlett, BSA  
Jason Adam Bryan, BSA  
Michael J. Conway, BSA  
Sonya Dempsey, BSA  
Tammy L. Guthrie, BSA  
Christopher Gary Harral, BSA  
Heather Hillman-Easley, BSA  
Tracy Stroud Morgan, BSA  
Scott Alexander Scharhag, BSA  
Jason Duane Tyer, BSA  
David Anthony Walsh, BSA

Jun Chen, MS  
Maithili Vijay Joshi, MS  
Lola Rene McCracken, MS  
Susan Grace Raymond, MS

## 1996 Graduates

Tye Anderson, BSA  
Scott Donnell, BSA  
Tommy Shane Easterling, BSA  
Chris Allen Holtgrewe, BSA  
Chad Eric Jacobs, BSA  
Jarrod H. Kersey, BSA  
Debra Ann Lovelady, BSA  
Wesley Michael McClure, BSA  
Tracy S. Peterson, BSA  
Jody Gene Pinkerton, BSA  
Jodye Marie Saunders, BSA  
Kelly C. Sloan, BSA  
Kenneth W. Storm, BSA  
Bobby Weaver, BSA

Phillip Lee Matsler, MS  
Corinna Jane Tressler, MS

## UA Has Top Judging Team

The University of Arkansas Poultry Judging Team won first place in the 1995 National Collegiate Poultry Judging Contest held in Fayetteville the first week in November. Team members are (left to right) **Tammie Conway, Robert Moore** (coach), **Erin Johnson, Matt Drewyor** and **Peyton Weaver**. Drewyor was top high individual. Conway had the highest score in the production category and was second high individual. Weaver was thirteenth high individual.



The second through fifth place teams were Mississippi State, North Carolina State, Louisiana State and Texas A&M. Other teams were from University of West Virginia, Crowder College, Oklahoma State, University of Wisconsin at River Falls and Kansas State.

The awards banquet, trophies and prizes were provided by the Poultry Improvement Committee of the Arkansas Poultry Federation.

# 1997-1998

## 1997 Graduates

Jessica C. Bates, BSA  
Jason Brandon Braziel, BSA  
Tammie Dee Conway, BSA  
Kay L. Creese, BSA  
Mathew Edward Drewyor, BSA  
Melissa Ruth Fancher, BSA  
Keith Ray Halterman, BSA  
David C. Jenkins, BSA  
Jeremiah James Judd, BSA  
Kenneth Meaux, BSA  
Lance Lee Price, BSA  
James Clinton Scanlon, BSA  
Brett R. Taylor, BSA  
Jared Scott Thomson, BSA  
Harold B. Watson, BSA  
Marion Allen Woodley, BSA  
Brett Alan Wright, BSA

Michael Aaron Baxter, MS  
David Alan Dickey, MS  
John William Hahn, MS  
Jarrod H. Kersey, MS

Emad Ahmad Saleh, PHD  
Guolu Zheng, PHD

## 1998 Graduates

Leasea D. Butler, BSA  
Darrin Wayne Dodson, BSA  
Christine Angela Fritts, BSA  
Kenneth James Hanson, BSA  
William H. Jones, BSA  
Brenda Kidd, BSA  
Belinda E. Mayo, BSA  
Leonard Cody Polley, BSA  
Scott Dean Ramer, BSA  
Jeffery Gill Sexton, BSA

Xing Dong, MS  
Mathew Edward Drewyor, MS  
Hang Xie, MS  
Qi Zheng, MS

### UA Hosts Record Number at Fall Judging Contest

#### ◆ Novice UA Team Finishes Fourth

The University of Arkansas Center of Excellence hosted a record 13 teams for the National Collegiate Poultry Judging Contest in November. The UA team finished fourth in overall competition behind the top team of Texas A&M, second place finisher Louisiana State University and third place finisher Crowder College. **David Austin**, UA senior, also finished fifth in overall individual competition.

Both **Dr. Jason Emmert**, coach, and **Erin Weaver**, assistant coach, were pleased with the results, considering that none of the University of Arkansas team members had previous experience in poultry judging at the high school or college level. **See Judging Page 2**



▲ The fall judging team of (from left) David Austin, Randy Yates, assistant coach Erin Weaver, Micah Bone and coach Jason Emmert turned in a solid performance at the fall event despite it being the first competition for all three students.

# 1999-2000

## *1999 Graduates*

David L. Austin, BSA  
Aaron Barrett, BSA  
Chasadee Bohannon, BSA  
Chad Martin Clem, BSA  
Sarah Parks Cottle, BSA  
Matt Evans, BSA  
Joseph Terrel Ferguson, BSA  
Christopher Jon Harris, BSA  
Jennifer R. G. Hughes, BSA  
Jerick Payeton Hutchinson, BSA  
Padgett McClain Isaacks, BSA  
Michael D. McConnell, BSA  
Patricia Michele Moore, BSA  
Crystal Rose Russell, BSA  
Angela Christina Sheppard, BSA  
Darby Lyn Spurlock, BSA  
Jonathan Wesley Warner, BSA  
Walter Gabriel Wight, BSA  
Randy D. Yates, BSA

Abdul S. Chaudhry, MS  
Chi-Ching Foong, MS  
Ming Ji, MS  
Aruna Panda, MS

## *2000 Graduates*

Scharidi J. Barber, BSA  
Thomas Eugene Bolinger, BSA  
Shaun Charles Bolinger, BSA  
Micah Noel Bone, BSA  
Matthew D. Clark, BSA  
Jenny Ann Dietzel, BSA  
Cory W. Evenson, BSA  
Phillip George Harmon, BSA  
Jubal Griff Hausam, BSA  
Wade Edward Hendrickson, BSA  
Bobby Lynn James, BSA  
Shwu-Ying Joyce Jong, BSA  
Fred H. Kao, BSA  
Bart C. Karnes, BSA  
Joshua Andrew Lowry, BSA  
Kimberly Darlene Manly, BSA  
Reema Persad-Clem, BSA  
Travis Ryan Reed, BSA  
Aaron Gene Stanphill, BSA  
William Scott Virden, BSA

Xiao-Qin Wang, MS  
Yongsheng Bai, MS  
Bernadette Godinez Dela Cooper, MS

Christine Angela Fritts, MS  
Arun K. Pandiri, MS  
Kimberly Amber Stine, MS

Mary Frances Forman, PHD  
Ciro Abel Ruiz-Feria, PHD  
Jianlin Si, PHD  
Zhenyuan Song, PHD  
Zhaohui Yang, PHD



# 2001-2002

## *2001 Graduates*

Tyson Wayne Ashcraft, BSA  
William Robert Bonner, BSA  
John Carlyn Brand, BSA  
Brandon S. Champion, BSA  
Cheryl L. Esters, BSA  
Brian William Esters, BSA  
Malea A. Frank, BSA  
Robert A. Lafleur, BSA  
Tessa Lynn Latta, BSA  
Mandy Leach Floyd, BSA  
Christina Spears Leach, BSA  
William Clinton Little, BSA  
J. Russell Mayo, BSA  
John Christopher Smalley, BSA  
Dilshika W. Wijesekera, BSA

Jeffrey Chad Johnson, MS  
Xiaofang Liu, MS  
Joshua B. Payne, MS  
Joel Douglas Reiman, MS

Chi Chen Hsu, PHD  
Huanghui Tang, PHD  
Xiaoli Wang, PHD

Hang Xie, PHD  
Fenglan Yan, PHD

## *2002 Graduates*

Chad Dale Burkett, BSA  
John S. Holliman, BSA  
Robin L. Jarquin, BSA  
Debra Ann LaBounty, BSA  
Becky Rose Lockhart, BSA  
Niki Loupe Mann, BSA  
Lindsay L. McWilliams, BSA  
Joseph Lance Moore, BSA  
Jason Matthew Nordin, BSA  
Ernest Spurlock, BSA  
Aaron Wayne Vanenburg, BSA  
Michael P. Vann, BSA  
Jason Lynn Warren, BSA  
Jeremy Cole West, BSA  
Jill A. Whatley, BSA  
Amanda D. Wolfenden, BSA

Hari Prakash Bhaskaran, MS  
Lisa Renee Bielke, MS  
Chad Martin Clem, MS  
Carolyn Dirain Ojano, MS  
Andrea Lea Elwood, MS  
Matthew Wayne Greenwood, MS  
Kerri Leigh Guenther, MS

Jack P. Higgins, MS  
Stacy E. Higgins, MS  
Jay Hughes, MS  
Daniel Iordanov Petkov, MS  
Harold Pope, MS  
Xiao Wang, MS  
Hui K. Wee, MS

Qi Jiang, PHD  
Vjollca Hajdin Konjufca, PHD  
Edgar O. Oviedo-Rondon, PHD  
Wenjun Pan, PHD

# 2003-2004

*2003 Graduates*

Kara Sue Bryan, BSA  
Bobbi Janeal Devor, BSA  
Robert R. Hubbard, BSA  
Cody A. Keen, BSA  
Abby E. Keener, BSA  
Timothy Gene Kimball, BSA  
April S. Loeffler, BSA  
Hugh Christopher Lumpkin, BSA  
Benjamin Joshua Outlaw, BSA  
Leslie Rose, BSA  
Harry Austin Spurlock, BSA  
Ashley Renee Stinnett, BSA

Mark Chapman, MS  
Murali Krishna Devabhaktuni, MS  
Sudha Kakarla, MS  
Hilary Odette Pavlidis, MS  
Thilakar Rathinam, MS  
Martha Esther Reyes, MS  
Christine E. Shamblin, MS

Valerie Louise Carney, PHD  
Christine Angela Fritts, PHD  
Wenjun Wang, PHD

*2004 Graduates*

Heather Marie Bishop, BSA  
Savannah N. Blankenship, BSA  
Mark Allen Cantrell, BSA  
Jana Marie Cornelison, BSA  
Olivia Bowen Faulkner, BSA  
Fauna May Ganson, BSA  
Julie C. Gibbs, BSA  
Bethany Ann Hall, BSA  
Russell Dale Harding, BSA  
Dan Hinton, BSA  
Adriane M. W. Hubbard, BSA  
Scott G. Jordan, BSA  
Britney K. Lamproe, BSA  
Matthew James Mckinnon, BSA  
Sean Pearson Schader, BSA  
Amresh Dattatray Tekawade, BSA  
Jerry D. Turner, BSA  
Daniel Morgan Webber, BSA  
Rachel Leigh Wessels, BSA  
Ross E. Wolfenden, BSA  
Eric Jason Wright, BSA

Jeff Thuy Huynh, MS  
Melissa A. Laudermilk, MS  
Xiali Liu, MS  
Christopher David Sartor, MS

Leslie Cain Cavitt, PHD  
Mark A. Cooper, PHD  
Jon Thomas Prigge, PHD

Amber L. Golden, MS  
John S. Holliman, MS



# 2005-2006

## 2005 Graduates

Oscar Antillon, BSA  
Steven R. Culwell, BSA  
Ashley K. Gartside, BSA  
William Drew Parker, BSA  
Matthew Young Reynolds, BSA  
Tara Chantel Shasteen, BSA  
Destiny B. Sikes, BSA  
Jarrod Matthew Vanbrunt, BSA

Fausto Solis De Los Santos, MS  
Olivia Bowen Faulkner, MS  
Krishna Raj Hamal, MS  
Robin L. Jarquin, MS  
Niki Loupe Mann, MS  
John Michael Phillips Mehaffey, MS  
Ixchel Reyes-Herrera, MS

Megharaja Manangi, PHD  
Padmakumar Pillai, PHD

## 2006 Graduates

Derek L. Allen, BSA  
Nathan Lee Allen, BSA  
Kristin D. Bateman, BSA  
Tanya Elaine Bell, BSA  
William D. Blocker, BSA  
Zachary Lee Hollowell, BSA  
Leann Nichole Layman, BSA  
Tamara M. Leonard, BSA  
Sarah Elizabeth Sexton, BSA  
Sarah Ranae Villines, BSA  
Mindy L. Waddell, BSA  
Austin Grant Williams, BSA

Vamsi Krishna Muthavarapu, MS

Lisa Renee Bielke, PHD  
Xiaofang Liu, PHD  
Jianwei Lu, PHD  
Hilary Odette Pavlidis, PHD  
Alberto Torres, PHD



# 2007-2008

*2007 Graduates*

Christopher Luke Adams, BSA  
Valerie Belle Brewer, BSA  
Jonathan P. Briggs, BSA  
Will S. Deakins, BSA  
Ashley D. Swaffar, BSA  
Sidney Barbara Jean Swonger, BSA  
Neda E. Tilley, BSA  
Joshua Lee Whitlow, BSA  
Karen E. Wright, BSA

Cesar Adrian Coto Sanchez, MS  
Vikrant Dutta, MS  
Amara Venkata Sunil Perumalla, MS  
Sree Veera Venk Saty Rayavarapu, MS

Marc De Beer, PHD  
Anne Christine Fanatico, PHD  
Jack P. Higgins, PHD  
Stacy E. Higgins, PHD  
Hongyan Li, PHD  
Farrah N. Madison, PHD  
Arijit Saha, PHD  
Manolis V. Spanakos, PHD  
Jose Luis Vicente-Salvador, PHD

*2008 Graduates*

Betsy Ann Conner, BSA  
Lynlee Brooke Dean, BSA  
Regina C. Finley, BSA  
Amanda Gayle Hancock, BSA  
Brian Barton Harvey, BSA  
Megan R. Hudgens, BSA  
Austin Franklin Lasater, BSA  
Katherine McGraw, BSA  
Cynthia E. Rorie, BSA  
Clayton W. Sallee, BSA  
Matt Stark, BSA  
Jada M. Thompson, BSA

Vivian Ferraroni Aguiar, MS  
Derek L. Allen, MS  
Vijay Durairaj, MS  
Ricardo David Ekmay, MS  
Robert Seth Harper, MS  
Joel Matcalf, MS  
Jonathan R. Moyle, MS

Sandro Benjamin Cerrate-Fernandez, PHD  
Olivia Bowen Faulkner, PHD

Krishna Raj Hamal, PHD  
Alberto Gino Lorenzoni-Calvo, PHD  
Tanika O'Connor-Dennie, PHD  
Fausto Solis De Los Santos, PHD  
Zurong Wang, PHD

# 2009-2010

## *2009 Graduates*

Samantha G. Blair, BSA  
Vanessa Jeheree Cook, BSA  
Dustin Wade Cross, BSA  
Landon Drew Dixon, BSA  
Sherita A. Freeman, BSA  
Candy L. Hemminger, BSA  
Nicole Victoria Holt, BSA  
James Grant Mason, BSA  
Ashley Amber Reeves, BSA  
Kaitlin Christine Thayer, BSA  
Jeffery M. West, BSA  
Jacob Kyle Wooley, BSA

Sumanth Kumar Putta, MS  
Susan Marie Sullivan, MS  
Amanda D. Wolfenden, MS

Guillermo Antonio Gaona-Ramirez, PHD  
Sherryll Lynn Layton, PHD

## *2010 Graduates*

Ashley E. Creasey, BSA  
Kaylee V. Daugherty, BSA  
Eric Brandon Friess, BSA  
Rebecca L. Gracey, BSA  
Mandy Nichale Graham, BSA  
Darla Marie Hancock, BSA  
Jaclyn Elayne Helms, BSA  
Tyler G. McGhee, BSA  
Hayle Iwanda Montgomery, BSA  
Chris S. Scarborough, BSA  
Joshua Lee Teague, BSA

Isaac David Harford, MS  
Bill Douglas Potter, MS  
Sarah M. Whipple, MS

Jonathan R. Moyle, PHD  
Komal Singh Rasaputra, PHD  
Ixchel Reyes-Herrera, PHD  
Cesar Adrian Coto Sanchez, PHD  
Srichaitanya Shivaramaiah, PHD

Sujata Ashok Sirsat, PHD  
Ross E. Wolfenden, PHD  
Jingjing Xie, PHD



2010 Poultry Judging Team  
Team members (front) l to r: Mike Norton,  
Reilly Thurow, Mike Howard; (back) l to r:  
Dennis Mason (Coach), Cody Gallagher,  
Valerie Brewer (Assistant Coach)

# 2011-2012

## *2011 Graduates*

Corbin D. Allen, BSA  
Jesse Porter Belt, BSA  
Kristen A. Byrne, BSA  
Tyler J. Clark, BSA  
Brooke A. Drumwright, BSA  
Lee P. Dykes, BSA  
Mallory L. Eanes, BSA  
Savannah M. Fiscus, BSA  
Laura Elizabeth Frank, BSA  
Alex D. Gilley, BSA  
Steven A. Hutter, BSA  
James H. Jones, BSA  
Kaitlin Mitchell, BSA  
Muhammad Arsalan Sabir, BSA  
Whitney Unser Tollett, BSA  
Erin L. Weaver, BSA  
Julie A. Wilcox, BSA

Komala Arsi, MS  
Valerie Belle Brewer, MS  
James Grant Mason, MS  
Anita Menconi, MS  
Nanditha Murali, MS

Ricardo David Ekmay, PHD  
Catalina Salas Duran, PHD  
Fengying Shi, PHD

## *2012 Graduates*

Hanna R. Arambel, BSA  
Megan A. Hamilton, BSA  
Mike D. Howard, BSA  
Cody J. Howard, BSA  
Terik Ray Jones, BSA  
Tiffany Michelle Masters, BSA  
Kaylee C. Rowland, BSA  
Emily K. Rowland, BSA  
Hunter G. Smith, BSA  
Jon L. Thompson, BSA

Gurueswar Nagarajan, MS  
Alissa Laura Piekarski, MS  
Ann N. Woo-Ming, MS

Sarah D. Goodgame, PHD  
Jarrod H. Kersey, PHD  
Vivek Ayamchirakkunnel Kuttappan, PHD  
Chang Ji Lu, PHD  
Franco J. Mussini, PHD  
Geetha Kumar Phillips, PHD  
Suwat Saengkerdsud, PHD

# 2013-2014

## *2013 Graduates*

Whitney Jewell Downum, BSA  
Kathryn M. Evans, BSA  
Jessica Catherine Fritts, BSA  
Landon Colt Gross, BSA  
Clint Jackson Haegele, BSA  
Emily Kathryn Lhamon, BSA  
Jennifer L. Lutes, BSA  
Blaine Thomas McClure, BSA  
Katie J. McGehee, BSA  
Michael Taylor Norton, BSA  
Joel Christian Thompson, BSA  
Justin Gage West, BSA  
Brandi Nicole Whittemore, BSA  
Famous Lue Yang, BSA

Arslan Aslam, MS  
Alex D. Gilley, MS  
Pramir Maharjan, MS  
Kaylee C. Rowland, MS  
Matt Stark, MS

Danny Bradley, PHD  
Valerie Belle Brewer, PHD  
Ujvala Deepthi Gadde, PHD  
Gopala Krishna Kallapura Sheshagiri, PHD  
Christopher Pixley, PHD  
Phiphob Sodsee, PHD  
Scott D. Stillwell, PHD

## *2014 Graduates*

Angus Asa Akin, BSA  
Casse J. Curtis, BSA  
Dustin Ryan Dixon, BSA  
Christopher Caleb Eagleson, BSA  
Betsy Kay Epps, BSA  
Ethan John Holt, BSA  
Ruben Kriseldi, BSA  
Lindsey Elizabeth Pritchett, BSA  
Jacob Eli Stonebarger, BSA  
Jeffrey Zack Wheeler, BSA

Hanna R. Arambel, MS

Komala Arsi, PHD  
Isaac David Harford, PHD  
Anita Menconi, PHD

## *20 Years of Poultry Science Department Graduates*

# 2015

### *2015 Graduates*

Taylor Kaleb Bates, BSA  
Nikolas Ryan Birchfield, BSA  
Carter Wayne Boatright, BSA  
Justin Trent Bowen, BSA  
Leslie Daniel Burnside, BSA  
Amanda Beth Cox, BSA  
Lucas Elzie Graham, BSA  
Corey Blaine Green, BSA  
Jacob Isaac Harriman, BSA  
Jesse Smith Harrison, BSA  
Jordan E. Miller, BSA  
Elizabeth Marie Moseley, BSA  
Jeffrey Allen Neal, BSA  
Valeria Quiroga Trigo, BSA  
Mikaela Rodriguez, BSA  
Michael John Schlumbohm, BSA  
Suzanna Lorraine Sikes, BSA  
Lori Louise Silva, BSA  
Christopher Randall Sims, BSA  
Ashley N. Sizemore, BSA  
Colton Lee Spencer, BSA  
Kallie Alyce Sullivan, BSA  
Kyle D. Teague, BSA  
Antonio Beitia Guerra, BSA

John Bui, BSA  
Samantha Renee Cox, BSA  
Easton Ver Jae Evans, BSA  
Devin Wayne Cook, BSA  
Casse J. Curtis, BSA  
Falon Le-Anne Ward, BSA  
  
Hanna Royce Arambel, MS  
Megan Ann Hancock, MS  
Divya Oppath Sivasankaran, MS  
Edwardo A. Vicuña S., MS  
Basanta Raj Wagle, MS  
  
Komala Arsi, PHD  
Valerie Belle Brewer, PHD  
Malea Anne Frank, PHD  
Isaac David Harford, PHD  
James Grant Mason, PHD  
Anita Menconi, PHD  
Thilakar Rathinam, PHD  
Phiphob Sodsee, PHD  
Karen Lake Vignale, PHD  
Chance Williams, PHD



## Poultry Science Students Embrace Abundant Opportunities to Earn and Learn



*Antonio Beitia learned Portuguese and the details of producing breeders during his stay in Brazil with Cobb-Vantress.*

Many students take advantage of the poultry industry and the Poultry Science Department's summer job opportunities in order to earn a paycheck and gain valuable hands-on training which will complement and expand their classroom experiences.

Students begin interviewing and accepting summer internships with companies like Cargill Meat Solutions as early as their fall semester.

Cal-Maine, Cobb-Vantress, George's,

Pilgrim's Pride, Simmons Foods and Tyson Foods interview students and offer positions throughout the spring semester. Even students who wait until after finals to decide what they will do for the summer, or students who have only completed one year of college, don't lose out and find poultry companies willing to make a place for them in their home towns. They are always happy to have poultry science majors.

Several new and returning students found part-time jobs with the poultry science faculty, which allowed them to work while taking summer classes. Lucas Graham and Kyle Teague, along with several others, got jobs with professors so they could delve deeper into areas where they had found an interest in class, like food safety. Every poultry science student who had wanted a job or internship for the summer found one locally, nationally or internationally and many had tough

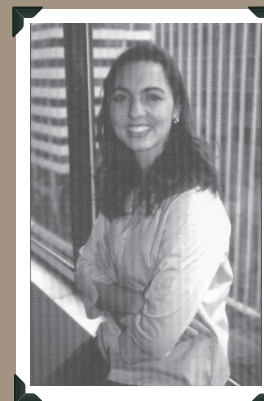
choices picking one job offer over another.

Many students believed a summer in the processing plant would complement their live-production training. Others were intent to gain international experience while some got to learn more about the business side of the industry, including domestic and international marketing. Live production, working in the hatchery, breeder management, working in the feed mill, and the table egg business were just some of the internship opportunities available to our students.

While books, term papers and tests are essential components of a college degree, poultry science students embrace their summer "beyond the classroom" experiences with enthusiasm. There is no question that their time in the "real world" sets them head and shoulders above the competition when they graduate.



*Colton Spencer gained valuable lab experience.*



*In 2000, twenty-nine poultry science students participated in the summer poultry science internship program, an all-time high for that time. Above left: Niki Loupe is shown in her office at the National Chicken Council in Washington, D.C. where her responsibilities included public relations, copywriting, compiling surveys and helping launch a new website. Above right: Bobbi Devor, left, and Chrisina Spears weigh birds for a trial for Cobb-Vantress during their internships with Cobb-Vantress in Siloam Springs, AR.*



*Eric Hagedon, left, is shown with his supervisor, Pete Shephard of Embrex, Inc., at a local hatchery during his summer 2000 internship.*

# Students

## Poultry Science Club



**Poultry Science Club Officers**  
**2015-16** L to R: Elizabeth Philpot, Photographer; Lesleigh Beer, Treasurer; Eleni Solberg, Secretary; Zach Rose, Publicity Officer; Josh Flees, President; not pictured Joe Hiltz, Vice President.



*Poultry Science Club members were on hand to help with the annual Poultry Science Scholarship Golf Tournament. The first tournament was held April 10, 2000 at the Pinnacle Country Club in Rogers, AR. Proceeds from this annual event benefit the poultry science scholarship fund. The tournament is always a four-person scramble and features a putting contest, longest drive contest and closest-to-the-pin contest.*

## 2014-2015 Poultry Science Undergraduate Scholarships

### **Richard F. Forsythe**

Taylor Bates

### **Daryl and Peggy Greene**

Lori Silva

### **Grover C. Harris**

Michael Schlumbohm

### **Oliver J. Hubbard**

### **Memorial**

Kyle Teague

### **Talmadge S. Nelson**

Carter Boatright

### **Poultry Science Matching**

Jon Alden

Kenneth Avery

Taylor Bates

Heather Baumgarner

Heather Becker

Antonio Bietia

Carter Boatright

Anna Brickell

Samantha Cox

Andrew Daugherty

Audrey Foster

Cecilia Gasca

Travis Hayworth

William Hewat

Deianira Huettemmoser

Kerley Lainyn

Joshua Lockhart

Haylee Lovelace

Tre'von Miller

Matthew Pinkerton

Zach Rose

Jared Sage

Michael Schlumbohm

Lori Silva

Glynn Smith

Eleni Solberg

Callie Taylor

Kyle Teague

Linda Combs

Mackenzie Jennings

### **PSA 92**

Amanda Cox

### **E. L. Stephenson**

Jared Sage

### **Randal Tyson Endowed**

Kristina Thomas

Haley Baumgarner

Clay Mallory

Callie McCreery

Morgan Stephens

Tiffany Swofford

Lesleigh Beer

Caylee Wright

Kayla Harmon

Joshua Flees

Kaylea Murphy

Blaine Graves

Joseph Hiltz

Tyler Snyder

Matthew Coale

Jackson Landon

Harlee Ray

Craig Maynard

Douglas Aldridge

Suzanna Sikes

Callie Grey

Elizabeth Moseley

Jeffrey Neal

Valeria Quiroga

Jenna Diehl

Christopher Sims

Colton Spencer

Ashley Sizemore

Kallie Sullivan

Jacob Harriman

John Bui

Stephanie Philpott

### **James Whitmore**

Antonio Beitia

Samantha Cox

### **Lionel Barton**

Travis Hayworth

### **Henry B. Shreve**

Joshua Lockhart

## 2015-2016 Poultry Science Undergraduate Scholarships

### **Richard F. Forsythe**

Jonathon Alden

### **Daryl and Peggy Greene**

Austin Evans

### **Grover C. Harris**

Eleni Solberg

### **Oliver J. Hubbard**

### **Memorial**

Craig Maynard

### **Talmadge S. Nelson**

Jordan Bryan

### **Poultry Science Matching**

Paula Johnson

Alex Newsom

Chelsea Ellington

Jonathon Strayhorn

Sarah Pitts

Garrett Day

Michaela Moder

Cameron Balusek

Elizabeth Cheek

Brock Daniels

Marissa Davis

Holly Henry

Faith Allen

Amelia Chapman

Hailey Hill

Clay Maynard

Katelin Taylor

Austin Decker

Chelsea Ellington

Jonathon Strayhorn

### **PSA 92**

Rachel Calvert

### **E. L. Stephenson**

Joshua Flees

### **Randal Tyson Endowed**

Jonathon Alden

Jennifer Bruner

Jordan Bryan

Lynda Combs

Danielle Edwards

Joshua Flees

Cecilia Gasca

Baline Graves

Callie Grey

Kayla Harmon

Haley Harriman

Joseph Hiltz

Landon Jackson

Mackenzie Jennings

Joshua Lockhart

Alex Newsom

Harlee Ray

Ace Rice

Chase Riley

Zachariah Rose

Eleni Solberg

Morgan Stephens

Tiffany Swofford

Kristina Thomas

Tristen Watson

### **James Whitmore**

Alex Newsom

### **Lionel Barton**

Jonathon Strayhorn

### **J. Kirk Skeeles**

Anne McAlister

Joseph Hiltz

### **POSC Alumni**

Caylee Wright

Elizabeth Philpot

### **J.O. Kumpe, Sr.**

Lesleigh Beer

Lynda Combs



## Study Abroad - Community Development in Mozambique, Africa



*Poultry science students Kayleigh Moyle, Chris Sims, and Kallie Sullivan in Mozambique in 2014.*

In May of 2012 The University of Arkansas' Walton College of Business and Dale Bumpers College of Agricultural, Food, and Life Sciences launched the first Community Development Program in Nampula, Mozambique, Africa. This University of Arkansas study abroad program began as a partnership with Patrick Cameron, a University alumnus and Arkansas entrepreneur who partially funded the program to allow students to experience and learn to work alongside the executives and employees at New Horizons (Novos Horizontes).

The first group of students in 2012 that spent four weeks in Mozambique included 11 students from various colleges at the University of Arkansas and three students from the Department of Poultry Science. From this first class it was evident how important students trained in Poultry Science are to this program as

they provide a level of knowledge about poultry and agriculture that most of the other students do not have.

The various projects the students have undertaken include designing and constructing a water filtration system from local products that will be used by outgrowers, designing and constructing a rocket stove, and interviewing growers and generating data in order to create a data base that will help show growers in that area the most important factors to concentrate on to grow a better broiler and make more money. Students with poultry backgrounds presented information and workshops to company personnel on performing necropsy of layers and broilers, feather sexing in the hatchery, disease recognition and prevention, and training on embryo diagnosis in the hatchery. They also evaluated hatchery efficiency, and did some trouble-shooting in breeder and pullet management, breeder house nest selection and design, and general poultry husbandry. The poultry students also assisted each of the other groups to ensure they fully understood general poultry knowledge and that their projects would be able to be implemented in their current poultry operations. Data was also collected while in Mozambique in 2013 that was used to present a poster at the International Poultry Scientific Program in Atlanta in 2014 entitled "Preference of broiler breeder hens for next box color and house position in rural Mozambique." Additional data is being collected to further support this and other projects.

## Student Achievements, Awards & Honors

- **Lisa R. Bielke** was awarded the PSA Early Achievement Award for Research.
- **Kristen A. Byrne** was awarded a Student Research Paper Certificate of Excellence at the Poultry Science Association Annual Meeting.
- **Kristen Byrne** (PhD program), student of Gisela Erf, served as Graduate Student Representative to the Board of the Poultry Science Association.
- **Luke Brockman**, MS in biomedical engineering and student of Yanbin Li, 2nd place in the category of nanotechnology. His poster title is "Nanowire and aptamer based QCM biosensor for rapid detection of avian influenza virus."
- **Justina Victoria Caldas** was awarded a Student Research Paper Certificate of Excellence at the Poultry Science Association Annual Meeting.
- **Ujvala Deepthi Gadde** received the CAFLS J.W. White Ph.D. Graduate Student Award.
- **Lauren Gentles**, student of B.W. Kong and Young Min Kwon, studying through NSF REU at Iowa State University, won second place in the biology segment of the INBRE poster competition.
- **Megan Hancock** was awarded a Student Research Paper Certificate of Excellence at the Poultry Science Association Annual Meeting.
- **Vivek Kuttapan**, doctoral student of Casey Owens, received a Certificate of Achievement recognizing his outstanding student research poster presentation at the

- annual meeting of the Southern Poultry Science Society, International Poultry Scientific Forum, and Jan. 23-24 in Atlanta.
- **Juan D. Latorre** was awarded a Student Research Paper Certificate of Excellence at the Poultry Science Association Annual Meeting.
- **Jacob Lum**, Ph.D., student of Yanbin Li in cell and molecular biology, won second place in the category of cell and molecular biology. His poster title was "In-vitro selection of aptamers against avian influenza virus subtype H7."
- **Sarbjee K. Makkar** was awarded a Student Research Paper Certificate of Excellence at the Poultry Science Association Annual Meeting.
- **Stephanie Philpot** was named Student of the Year at the International Production & Processing Expo's College Student Career Program.



**(LtoR) Alex D. Gilley**, directed by Nick Anthony; **Sandip Shrestha**, directed by Dan Donoghue; **Alissa L. Piekarski**, directed by

Walter Bottje; **Sara K. Orłowski**, directed by Nick Anthony; and **Jessica L. Solo**, directed by Casey Owens, were all awarded Poultry Science Association Student Research Certificates of Excellence.

# Department of Poultry Science Faculty

## 20 Years of Faculty Awards and Honors

Year	Name	Award or Title	Agency	Year	Name	Award or Title	Agency
1997	Craig Coon	Named Poultry Federation Chair	Poultry Federation	2004	John Marcy	Named Chair Designate	IFT
1998	Nick Anthony	Purina Mills Teaching Award	PSA*	2004	Jerry Wooley	Specialist of the Year	Ark. 4-H
1999	Nick Anthony	Advising Award	AAA**	2004	Lisa Bielke	Outstanding Manuscript Award	SPSS
1999	John Kirby	John W. White Research Award	DBCAFLS	2004	Eric Wright	John W. White Outstanding Undergrad Student Award	DBCAFLS
1999	Gisela Erf	John W. White Teaching Award	DBCAFLS	2004	Diana Bisbee	Professional Support Award Non-classified Staff	DBCAFLS
1999	Judging Team	1st Place National Collegiate	Ntnl. Judging Contest	2004	Jason Emmert	USDA Higher Ed Teaching Award	Southern Region
1999	Gisela Erf	Purina Mills Teaching Award	PSA	2004	Jason Emmert	Named Poultry Federation Chair	Poultry Federation
1999	Robert Wideman, Jr.	Broiler Research Award	PSA	2005	Jerry Wooley	Specialist Performance Award	Arkansas CES
1999	Gary Davis	Recruitment Award	PSA				
1999	Jason Emmert and Gary Davis	Trio Award	Upward Bound				
2000	Susan Watkins	Special Recognition Award	Poultry Federation				
2000	Annie Donoghue	Hy-line Research Award	PSA				
2000	David Chapman	Broiler Research Award	PSA				
2000	David Cawthon	Grad Student Manuscript Award	PSA				
		Grad Student Bumpers Scholar	DBCAFLS				
		Young Investigator Award	SFRR***				
2001	Josh Payne	Grad Student Award of Excellence	SPSS****				
2001	Ciro Ruiz-Feria	Grad Student Manuscript Award	PSA				
2001	David Chapman	John W. White Research Award	DBCAFLS				
2001	James Denton	“Man of the Year”	Poultry Federation				
2001	Gisela Erf	Award of Excellence	UA Teaching Academy				
2001	Billy Hargis	Achievement in Poultry Science	PSA				
2001	Philip Moore, Jr.	Scientist of the Year Southern Plains Area	USDA-ARS				
2002	Jason Emmert	Purina Mills Teaching Award	PSA				
2002	Mark Parcels	Hy-line Research Award	PSA				
2002	Robert Wideman, Jr.	John W. White Research Award	DBCAFLS				
2002	Stacy Higgins	Distinguished Grad Scholar Award	DBCAFLS				
2002	Jill Townsend	John W. White Undergrad Award	DBCAFLS				
2002	Jason Emmert	John W. White Teaching Award	DBCAFLS				
2003	Frank Jones	American Egg Board Team Award	PSA				
2003	James Denton	Named a “Fellow”	PSA				
2003	Park Waldroup	Named to Novus Endowed Chair	CEPS				
2003	Stacy Higgins	Distinguished Doctoral Fellow	CEPS				
2003	Walter Bottje	Broiler Research Award	PSA				
2004	John Marcy	Director, Education & Outreach	NAFSS				

\*PSA = Poultry Science Association

\*\*AAA = Arkansas Alumni Association

\*\*\*SFRR = Society for Free Radical Research

\*\*\*\*SPSS = Southern Poultry Science Society

**20 Years of Faculty Awards and Honors**

<b>Year</b>	<b>Name</b>	<b>Award</b>
2005	Jerry Wooley	Extension Specialist Performance Award <sup>3</sup>
2005	Jason Emmert	Named the Poultry Federation Chair
2005	Jason Emmert	USDA Higher Education Teaching Award, S. Region
2005	Gisela Erf	Jack Justus Teaching Award <sup>2</sup>
2005	John Kirby	Outstanding Faculty Award <sup>1</sup>
2005	Steve Ricke	Donald “Buddy” Wray Endowed Chair in Food Safety
2005	Memo Tellez	Mexican Poultry Sci. Assoc. Award for Excellence
2005	Bill Huff	Broiler Research Award <sup>5</sup>
2005	Gisela Erf	Helene Cecil Leadership Award <sup>5</sup>
2006	Gisela Erf	Tyson Professorship in Avian Immunology
2006	Gisela Erf	Distinguished Faculty Achievement Award <sup>4</sup>
2006	Anne Donoghue	Helene Cecil Leadership Award <sup>5</sup>
2006	Steve Ricke	American Egg Board research Award <sup>5</sup>
2006	Bill Huff	Named PSA Fellow <sup>5</sup>
2006	Susan Watkins	WATT Poultry USA-Top Gun
2007	Yanbin Li	Named Tyson Endowed Chair in Biosensing Engineering
2007	Billy Hargis	Named Tyson Chair in Sustainable Poultry Health
2007	Dan Donoghue	John W. White Research Excellence Award <sup>3</sup>
2008	Yanbin Li	John W. White Research Excellence Award <sup>3</sup>
2008	Susan Watkins	John W. White Extension Excellence Award <sup>3</sup>
2008	Bob Wideman	Named PSA Fellow <sup>5</sup>
2008	Wayne Kuenzel	John Imhoff Outstanding Research Publication Award
2008	Young-Min Kwon	Hy-Line International Research Award <sup>5</sup>
2009	Billy Hargis	Frank Perdue Live Poultry Food Safety Award <sup>5</sup>
2009	John Marcy	Named Institute of Food Technology Fellow
2010	Gisela Erf	Faculty Gold Medal Award <sup>1</sup>
2010	Gerry Huff	National Turkey Federation research Award <sup>5</sup>
2010	Wayne Kuenzel	Embrex Fundamental Science Award <sup>5</sup>
2010	Billy Hargis	Frank Perdue Live Poultry Foods Safety Research Award <sup>5</sup>
2010	Wayne Kuenzel	John W. White Research Excellence Award <sup>3</sup>
2011	Yvonne Thaxton	Named Chair of the Center for Food Animal Wellbeing Endowment
2011	Billy Hargis	John W. White Research Excellence Award <sup>3</sup>
2011	Dustan Clark	Distinguished Center of Influence Award <sup>3</sup>
2012	Craig Coon	Novus International Outstanding Scholar Award
2012	Wayne Kuenzel	Named PSA Fellow <sup>5</sup>
2012	Billy Hargis	Named Outstanding Mentor <sup>1</sup>
2012	Gisela Erf	Distinguished Honors College Faculty Award <sup>2</sup>

<b>Year</b>	<b>Name</b>	<b>Award</b>
2012	Gisela Erf	Dr. John and Mrs. Lois Imhoff Award for Outstanding Teaching and Student Mentorship <sup>1</sup>
2012	Susan Watkins	Alltech Award of Excellence
2012	John Marcy	Named on National Advisory Committee for Meat and Poultry Inspection for U.S. Secretary of Ag. Vilsack
2013	Susan Watkins	Named Chair of The Poultry Federation Endowment
2013	Gisela Erf	Named Outstanding Mentor <sup>1</sup>
2013	Byung-Whi Kong	Hy-Line International Research Award <sup>5</sup>
2013	Keith Bramwell	Outstanding International Education Faculty Award <sup>2</sup>
2013	Young-Min Kwon	Zoetis Fundamental Science Award <sup>5</sup>
2014	Mike Kidd	Named the Poultry Federation Industry Leader
2014	Casey Owens	Named Holder of Novus Int. Endowed Chair
2014	Memo Tellez	Frank Perdue Live Poultry Foods Safety Research Award <sup>5</sup>
2014	Walter Bottje	Zoetis Fundamental Science Award <sup>5</sup>
2014	Robert F. Wideman, Jr.	Novus Outstanding Scholar Award
2014	Lisa Bielke	New Investigator of the Year Award
2014	John Marcy	Earned Certified Food Scientist designation
2014	Guillermo Tellez	Frank Perdue Live Poultry Food Safety Award <sup>5</sup>
2015	Gisela Erf	John W. White Research Excellence Award <sup>3</sup>
2015	Billy M. Hargis	Names a Fellow of the Poultry Science Association
2015	Robert F. Wideman, Jr.	Honorary Award as Teacher, Advisor and Life Mentor from students and friends of the Poultry Science Association Nutrition Symposium

<sup>1</sup>University of Arkansas

<sup>2</sup>Dale Bumpers College of Agricultural, Food and Life Sciences

<sup>3</sup>Division of Agriculture

<sup>4</sup>University of Arkansas Alumni Association

<sup>5</sup>Poultry Science Association

*Emeritus Faculty*

L. David Andrews, Poultry Production

T. Lionel Barton, Poultry Nutrition

James Denton, Food Safety

Grover Harris, Poultry Physiology

Frank T. Jones, Extension Section Leader

Talmadge S. Nelson, Poultry Nutrition

Park W. Waldroup, Poultry Nutrition

**Michael T. Kidd**

Director, Center of Excellence for Poultry Science; Department Head, Dept. of Poultry Science

Ph.D. (1994), North Carolina State University, Raleigh North Carolina

M.S. (1991), University of Arkansas, Fayetteville, Arkansas

B.S.A. (1990), University of Arkansas, Fayetteville, Arkansas



**Nicholas B. Anthony**

Poultry Breeding & Genetics

Ph.D., Genetics (1989), Virginia Tech

M.S., Poultry Science, Ohio State University

B.S., Poultry Science (1983), Ohio State University

Research Areas: Line selection for muscle quality and disease resistance



**Walter Bottje**

Physiologist

Ph.D. (1984), University of Illinois

M.S. (1978), Southern Illinois University

B.S., Zoology (1976) (minor in Chemistry)

Research Areas: Cellular bioenergetics



**R. Keith Bramwell**

Extension Reproductive Physiologist

Ph.D., Poultry Science (1995), University of Georgia

M.S., Poultry Science (1991), University of Georgia

B.S., Animal Science (1989), Brigham Young University

Research Areas: Broiler breeder performance and management



**H. David Chapman**

Parasitologist

Ph.D., Parasitology, University of York, York, UK

B.S., Zoology, Imperial College of Science and Technology, London

Research Area: Control of coccidiosis



**Karen Christensen**

Extension-Associate Professor

Ph.D., Poultry Physiology, Mississippi State University

M.S., Washington State University

Research Areas: Broiler management, nutrition, health



**Craig Coon**

Poultry Nutritionist

Ph.D., Biochemistry and Biophysics (1973), Texas A&M University

M.S., Plant Physiology and Biochemistry (1970), Texas A&M University

B.S., Animal Science (1966), Texas A&M University

Research Areas: Broiler breeder nutrition and body composition



**F. Dustan Clark**

Extension Poultry Health Veterinarian

Associate Center Director for Extension

Ph.D., Veterinary Pathobiology (1991), Texas A&M University

M.S., Veterinary Microbiology (1984), Texas A&M University

D.V.M. (1980), Texas A&M University

Research Areas: Poultry health, disease recognition and biosecurity



**Dan J. Donoghue**

Preharvest Food Safety and Toxicology  
Post-Doctoral Fellowship, Rutgers University  
Ph.D., Poultry Science, Texas A&M University  
M.S., Animal Science, Brigham Young University  
B.S., Health Science, Medical University of South Carolina  
Research Areas: Poultry pathogen and residue reduction



**Sami Dridi**

Avian Endocrinology and Molecular Genetics  
Ph.D., Molecular and Cellular Biology (2001), INPL-INRA, France  
MAS, Agronomic Sciences, Molecular and Cellular Biology (1998), INPL France  
Engineering degree, Animal Science (1995), ESAM Tunisia  
B.S., Math and Science (1990), School of Mateur, Tunisia  
Research Area: Peripheral and central molecular mechanisms involved in the regulation of energy homeostasis and fat metabolism in avian species for the improvement of growth efficiency



**Gisela F. Erf**

Immunologist, The Holder of Tyson Professorship in Avian Immunology  
Ph.D., Immunology (1988), Cornell University  
M.S., Reproductive Physiology (1983), University of Guelph, Canada  
B.S., Animal Science (1981), University of Guelph, Canada  
Associate Degree (1979), Nova Scotia Agricultural College  
Research Areas: Innate and adaptive immunity and disease susceptibility



**H.L. Goodwin, Jr.**

Agricultural Economist  
Ph.D., Agricultural Economics (1982), Oklahoma State University  
M.S., Agricultural Economics (1978), Oklahoma State University  
B.S., Agricultural Education (1975), Oklahoma State University  
Research Areas: Economic comparisons and management analysis



**Casey M. Owens-Hanning**

Poultry Processing and Products  
Ph.D., Food Science and Technology (1999), Texas A&M University  
M.S., Food Science and Technology (1996), Texas A&M University  
B.S., Poultry Science (1994), Texas A&M University  
Research Areas: Processing techniques and muscle quality



**Billy M. Hargis**

Director Poultry Health Lab and Veterinarian  
D.V.M. and Ph.D., University of Minnesota  
M.S., Poultry Science (1983), University of Georgia  
B.S. (1980), University of Minnesota  
Research Areas: Poultry health and vaccine development



**Byung-Whi Kong**

Functional Genomics and Molecular Virologist  
Ph.D., Molecular Virology, University of Minnesota  
M.S., Molecular Cell Biology, University of Minnesota  
B.S., Animal Science, Korea University, S. Korea  
Research Areas: Virus genetic engineering analysis



**Wayne J. Kuenzel**

Physiologist/Neurobiologist  
Ph.D., Zoology, University of Georgia  
M.S., Biology, Bucknell University  
B.S., Biology, Bucknell University  
Research Areas: Poultry neurobiology and behavior



**Young Min Kwon**

Microbiologist  
Ph.D., Poultry Science (2000), Texas A&M University  
M.S., Animal Science (1994), Seoul National University, South Korea  
B.S., Animal Science (1992), Seoul National University, South Korea  
Research Areas: Microbial genomics



**Yanbin Li**

Professor of Biological Engineering, Tyson Endowed Chair in Biosensing Engineering  
Ph.D., Agricultural Engineering (1989), Pennsylvania State University  
M.S., Agricultural Engineering (1985), University of Nebraska-Lincoln  
B.S., Agricultural Engineering (1978), Shenyang Agricultural University  
Research Areas: Biosensing engineering



# Department of Poultry Science Faculty

## John Marcy

Extension Food Scientist  
Ph.D., Food Technology, Iowa State University  
M.S., Food Technology, Iowa State University  
B.S., Food Technology and Science, University of Tennessee  
Research Areas: Processing and quality control



## Douglas Rhoads

Director of Interdisciplinary Graduate Program in Cell and Molecular Biology  
Ph.D. (1986), Kansas State University  
Research Areas: Poultry molecular genetics

## Steven C. Ricke

Donald Buddy Wray Chair in Food Safety  
Ph.D., Animal Science and Bacteriology, University of Wisconsin  
M.S., University of Illinois, Urbana-Champaign  
B.S., University of Illinois, Urbana-Champaign  
Research Areas: Poultry food safety



## Beth Rumley

Senior Staff Attorney  
B. A., J.D., L.L.M.  
Juris Doctor, University of Toledo College of Law  
Masters of Laws, University of Arkansas College of Law  
Areas of Interest: Agricultural law; natural resources law; animal agriculture law; food law; land use



## Michael F. Slavik

Bacteriologist  
Ph.D., Veterinary Microbiology and Preventative Medicine, Iowa State University  
M.S., Bacteriology, Iowa State University  
B.A., Biology, Drake University  
Research Areas: Poultry bacteria pathogenesis



## Yvonne Vizzier Thaxton

Professor and Director, Center for Food Animal Wellbeing  
Ph.D. (1990), Auburn University, Auburn, Alabama  
M.S. (1971), Mississippi University for Women, Columbus, Mississippi  
B.S. (1968), Mississippi University for Women, Columbus, Mississippi  
Research Areas: Poultry humane slaughter and general welfare



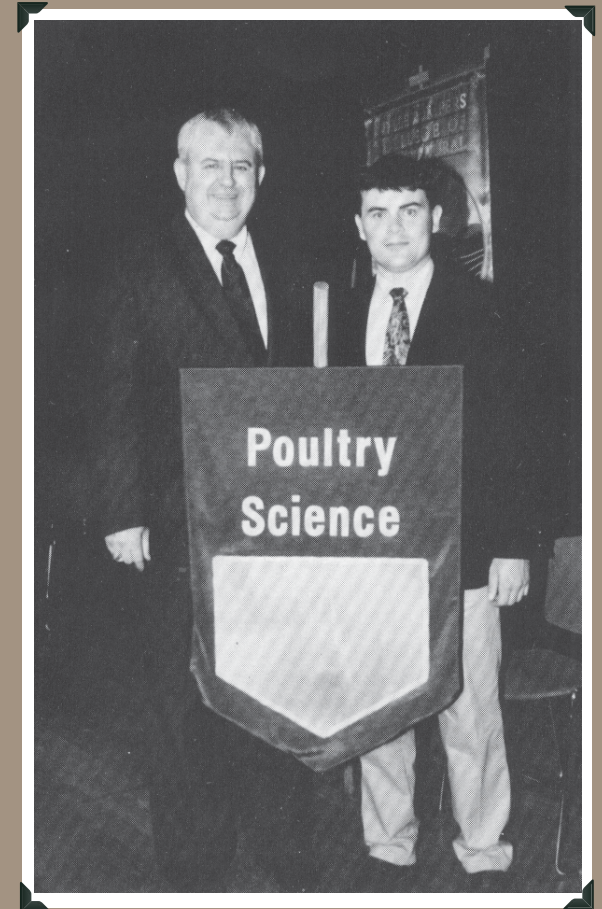
## Susan E. Watkins

Professor/Extension Specialist  
Ph.D., Poultry Nutrition, University of Arkansas  
M.S., Poultry Nutrition, University of Arkansas  
B.S., Animal Science, University of Arkansas  
Research Areas: Poultry management and nutrition



## Robert F. Wideman, Jr.

Associate Director of the Center and Physiologist  
Ph.D., Regulatory Biology (Physiology), University of Connecticut  
M.S., Regulatory Biology (Physiology), University of Connecticut  
B.S., Biology, University of Delaware  
Research Areas: Metabolic disease physiology



*Center Director and Poultry Science Department Head James Denton pictured with James Tyrel Anderson who received the 1996 Outstanding Poultry Science Senior Award from the Dale Bumpers College of Agricultural, Food and Life Sciences. Poultry Science graduates in the class of 1996 were the first to attend classes in the Center of Excellence for Poultry Science. That class is also distinguished by being the first four-year class from the Poultry Science Department.*

## Class of 1996

James Tyrel Anderson  
Michael J. Conway  
Chris A. Holtgrewe  
Chad E. Jacobs  
Jarrod H. Kersey  
Tracy Shawn Peterson

Jodye M. Pool  
Scott A. Scharhag  
Kenneth W. Storm  
Jason D. Tyer  
David A. Walsh  
Peyton B. Weaver

**USDA/ARS Faculty**



**Annie M. Donoghue**  
USDA-ARS Research Leader  
Ph.D., Physiology (1991), F. Edward Hebert  
School of Medicine, Uniformed Services  
University of Health Sciences  
M.S., Animal Science (1986), Texas A&M  
University  
B.S., Zoology (1983), San Diego State

University  
Research Areas: Poultry pathogen reduction



**Philip A. Moore, Jr.**  
Soil Chemist  
Ph.D., Marine Sciences (1987), Louisiana  
State University  
M.S. in Agronomy (1981), University of  
Arkansas  
B.S., Soil Science (1978), University of

Arkansas  
Research Areas: Poultry waste management



**Narayan C. Rath**  
Physiologist, Research Professor  
Ph.D., Zoology with specialization in Repro-  
ductive Endocrinology, University of Delhi,  
India  
M.S., Zoology with specialization in Repro-  
ductive Endocrinology, University of Delhi,

India  
Research Areas: Poultry leg functionality



*Peer-Reviewed Journal Articles, Books and Book Chapters (2014)*

Arsi, K., A. M. Donoghue, A. Woo-Ming, P. J. Blore and D. J. Donoghue. 2014. Intra-cloacal inoculation, an effective screening method for determining the efficacy of probiotic bacterial isolates against *Campylobacter* colonization in broiler chickens. *Journal of Food Protection* (In Press).

Bottje, W.G., B-W. Kong, J. Lee, T. Washington, J. Baum, T. Wing, and J. Hardiman. 2014. Potential Roles of mTOR and Protein Degradation Pathways in the Phenotypic Expression of Feed Efficiency in Broilers. *Biochemistry & Physiology* 3:125.

Burner, D.M., D.K. Brauer, J.L. Snider, C.A. Harrinton, and P.A. Moore, Jr. 2014. Phenological responses of juvenile pecan and white oak on an upland site. *Agroforest Syst.* 88:141-155.

Chapman, H.D. 2014. Milestones in avian coccidiosis research: a review. *Poult. Sci.* 93:501-511.

Chapman, H.D., T.K. Jeffers. 2014. Vaccination of chickens against coccidiosis ameliorates drug resistance in commercial poultry production. *Int. J. Parasitol. Drugs and Drug Resistance.* <http://dx.doi.org/10.1016/j.ijpddr.2014.10.002>

Donoghue, D. J., H.L. Goodwin, A.R. Mays, K. Arsi, M. Hale, T. Spencer, M. O’Gorman, S. Jose, J.M. Burke, and A.M. Donoghue. 2014. Armed to Farm: Developing training programs for military veterans in agriculture. *Journal of Rural Social Sciences* (In Press).

Delgado, R., J. Latorre, E. Vicuña, X. Hernandez-Velasco, J. Vicente, A. Menconi, G. Kallapura, S. Layton, B. Hargis, and G. Téllez. 2014. Glycerol supplementation enhances the protective effect of dietary FloraMax-B11 against *Salmonella* Enteritidis colonization in neonate broiler chickens. *Poultry science*:ps3927.

El-Gohary, F. A., W. E. Huff, G. R. Huff, N. C. Rath, Z. Y. Zhou, and A. M. Donoghue. 2014. Environmental augmentation with bacteriophage prevents colibacillosis in broiler chickens. *Poult. Sci.* 93:2788-2792.

El-Sherry, S., T. Rathinam, M.A. Hafeez, M.E. Ogedengbe, H.D. Chapman, and J.R. Barta. 2014. Biological re-description of a genetically typed, single-oocyst line of the turkey coccidium *Eimeria meleagridis* Tyzzer 1929. *Parasitol. Res.* 113:1135-1146.

Fernandez-Siurob, I., M. Retana, G. Tellez, L. Arroyo-Navarro, B. Bañuelos-Hernandez, and I. Castellanos-Huerta. 2014. Assessment of viral interference using a chemical receptor blocker against avian influenza and establishment of protection levels in field outbreaks. *Vaccine* 32:1318–1322.



- Fu, Y., Z. Callaway, J. Lum, R. Wang, J. Lin, and Y. Li. 2014. Exploring enzymatic catalysis in ultra-low ion strength media for ion strength increase-based impedance biosensing of virus using a bare interdigitated electrode. *Analytical Chemistry* 86 (4):1965-1971.
- Gilley, A. D., H. Lester, I. Y. Pevzner, N. B. Anthony, and R. F. Wideman, Jr. Evaluating portable wire flooring models for inducing bacterial chondronecrosis with osteomyelitis (BCO) in broilers. *Poult. Sci.* 93:1354-1367.
- Han, F.F., X. Qi, L.Y. Li, L.J. Bu, Y.C. Fu, Q.J. Xie, M.L. Guo, Y. Li, Y.B. Ying, and S.Z. Yao. 2014. Bio-inspired preparation of fibrin-boned bionanocomposites of biomacromolecules and nanomaterials for biosensing. *Advanced Functional Materials* 24(31):5011-5018.
- Hernández-Velasco, X., H. Chapman, C. Owens, V. Kuttappan, B. Fuente-Martínez, A. Menconi, J. Latorre, G. Kallapura, L. Bielke, T. Rathinam, and others. 2014. Absorption and deposition of xanthophylls in broilers challenged with three dosages of *Eimeria acervulina* oocysts. *British poultry science*.
- Hu, Y.H., C.C. Wang, B. Bai, M.T. Li, R. Wang, and Y. Li. 2014. Rapid detection of *Staphylococcus aureus* using quantum dots as fluorescent labels. *Int. J. Agri. Biol. Engr.* 7:77-83.
- Huff, W.E., and G.R. Huff. 2014. Bacteriophage therapy in animal production. pages 201-214 in *Phage Therapy: Current Research and Applications*. Jan Borysowski, Ryszard Miedzybrodski, and Andrzej Gorski eds. Caister Academic Press.
- Huff, G.R., W.E. Huff, and N. C. Rath. 2014. Effects of vitamin D and yeast extract supplementation on turkey mortality and clostridial dermatitis incidence in a dexamethasone immunosuppression model. *Avian Dis.* 58:572-578
- Hernández-Velasco, X., H.D. Chapman, C.M. Owens, V.A. Kuttappan, B. Fuente-Martínez, A. Menconi, J.D. Latorre, G. Kallapura, L. Bielke, T. Rathinam, B.M. Hargis, and G. Tellez. 2014. Absorption and deposition of xanthophylls in broilers challenged with three dosages of *Eimeria acervulina* oocysts. *Br. Poult. Sci.* DOI:10.1080/00071668.2013.879095.
- Jang, H-M., G.F. Erf, K.C. Rowland, and B-W. Kong. 2014. Genome resequencing and bioinformatic analysis of SNP containing candidate genes in the autoimmune vitiligo Smyth line chicken model. *BMC Genomics.* 15:707
- Kallapura, G., A. Botero, S. Layton, L. Bielke, J. Latorre, A. Menconi, X. Hernández-Velasco, D. Bueno, B. Hargis, and G. Téllez. 2014a. Evaluation of recovery of *Salmonella* from trachea and ceca in commercial poultry. *The Journal of Applied Poultry Research* 23:132–136.

- Kallapura, G., M. Kogut, M. Morgan, N. Pumford, L. Bielke, A. Wolfenden, O. Faulkner, J. Latorre, A. Menconi, X. Hernandez-Velasco, and others. 2014b. Fate of Salmonella Senftenberg in broiler chickens evaluated by challenge experiments. *Avian Pathology*:1–16.
- Kallapura G., N. R. Pumford, L. R. Bielke, B. M. Hargis, and G. Tellez. 2014. Evaluation of Respiratory Route as a Viable Portal of Entry for Salmonella in Poultry. *Veterinary Medicine: Research and Reports*. 5: 59–73. 2014.
- Kallapura G., N. R. Pumford, X. Hernandez-Velasco, B. M. Hargis, and G. Tellez. 2014. Mechanisms Involved in Lipopolysaccharide Derived ROS and RNS Oxidative Stress and Septic Shock. *Journal of Microbiology Research and Reviews*. 2 (1): 6-11.
- Krishnamoorthy, S., C. Smith, A.A. Al-Rubaye, G.F. Erf, R.F. Wideman, N.B. Anthony, and D.D. Rhoads. 2014. A quantitative trait locus for ascites on chromosome 9 in broiler chicken lines. *Poult. Sci.* 93:301-317.
- Kuttappan, V. A., L. R. Bielke, A. D. Wolfenden, L.R. Berghman, G. Tellez, B. M. Hargis, and O. B. Faulkner. 2014. Comparison of different ELISA protocols for the detection of IgA against influenza nucleoproteins in trachea of vaccinated chickens. Accepted *Poultry Science* 10-27-14.
- Lassiter, K., S. Dridi, A. Piekarski, L. Greene, B.M. Hargis, B-W. Kong, and W.G. Bottje. 2014. Bioenergetics in chicken embryo fibroblast cells: Evidence of lower proton leak in spontaneously immortalized chicken embryo fibroblasts compared to young and senescent primary chicken embryo fibroblast cells. *Comp. Biochem. Physiol. A. Mol. Integr. Physiol. Biochemical Physiology*. 175:115-123
- Latorre, J., X. Hernandez-Velasco, G. Kallapura, A. Menconi, N. Pumford, M. Morgan, S. Layton, L. Bielke, B. Hargis, and G. Tellez. 2014. Evaluation of germination, distribution, and persistence of *Bacillus subtilis* spores through the gastrointestinal tract of chickens. *Poultry science*:PS3809.
- Latorre, J.D., X. Hernandez-Velasco, M.H. Kogut, J. L. Vicente, R. Wolfenden, A. Wolfenden, B. M. Hargis, V. Kuttappan, and G. Tellez. 2014. Role of a *Bacillus subtilis* direct-fed microbial on digesta viscosity, bacterial translocation and bone mineralization in neonatal poult fed with a rye-based diet. Accepted *Frontiers in Veterinary Science* 11-13-14.
- Lin, J.H., R. Wang, R.R. Jiao, Y.T. Li, Y. Li, M. Liao, Y.D. Yu, M.H. Wang. 2014. An impedance immunosensor based on low-cost microelectrodes and specific monoclonal antibodies for rapid detection of avian influenza virus H5N1 in chicken swabs. *Biosensors & Bioelectronics* (in press) (accepted Sept. 10, 2014)
- Luján-Rhenals D.E., R. Morawicki, and S.C. Ricke. 2014. Tolerance of *S. cerevisiae* and *Z. mobilis* to inhibitors produced during dilute acid hydrolysis of soybean meal. *J. Environ. Sci. Health, Part B*. 49:305–311.

- Menconi, A., G. Kallapura, J. Latorre, M. Morgan, N. Pumford, B.M. Hargis, and G. Tellez. 2014. Identification and Characterization of Lactic Acid Bacteria in a Commercial Probiotic Culture. *Bioscience of Microbiota, Food and Health* 33:25–30.
- Menconi, A., L.R. Bielke, B.M. Hargis, and G. Tellez. 2014. Immuno-Modulation and Anti-Inflammatory Effects of Antibiotic Growth Promoters Versus Probiotics in the Intestinal Tract. *Journal of Microbiology Research and Reviews* Vol. 2(7): 62-67.
- Menconi, A., V. Kuttappan, X. Hernandez-Velasco, T. Urbano, F. Matté, S. Layton, G. Kallapura, J. Latorre, B. Morales, O. Prado, and others. 2014a. Evaluation of a commercially available organic acid product on body weight loss, carcass yield, and meat quality during preslaughter feed withdrawal in broiler chickens: A poultry welfare and economic perspective. *Poultry science* 93:448–455.
- Menconi, A., N. R. Pumford, M. J. Morgan, L. R. Bielke, G. Kallapura, J. D. Latorre, A. D. Wolfenden, X. Hernandez-Velasco, B. M. Hargis, and G. Tellez. 2014b. Effect of Chitosan on *Salmonella Typhimurium* in Broiler Chickens. *Foodborne pathogens and disease* 11:165–169.
- Metcalf, J. H., Moore Jr, P. A., Donoghue, A. M., Arsi, K., Woo-Ming, A., Blore, P. J., Hanning, I., Ricke, S. C., and Donoghue, D. J. 2014. Bacterial content in runoff from simulated rainfall applied to plots amended with poultry litter. *Int. J. Poult Sci.* 13:133-137.
- Mohammad H. Shahir, Omid Afsarian, Saeed Ghasemi and Guillermo Tellez. 2014. Effects of Dietary Inclusion of Probiotic or Prebiotic on Growth Performance, Organ Weight, Blood Parameters and Antibody Titers Against Influenza and Newcastle in Broiler Chickens. *International Journal of Poultry Science* 13 (2): 70-75, 2014.
- Moyle, J. R., K. Arsi, A. Woo-Ming, H. Arambel, A. Fanatico, P.J. Blore, D.J. Donoghue and A.M. Donoghue. 2014. Growth performance of fast-growing broilers reared under different types of production systems with outdoor access: Implications for organic and alternative production systems. *The Journal of Applied Poultry Research, J Appl Poult Res* 23 (2): 212-220.
- Packialakshmi, B., R. Liyanage, K.S. Rasaputra, J.O. Lay Jr., and N.C. Rath. 2014. Isolation and characterization of chicken bile matrix metalloproteinase. *Poult. Sci.* 93:1495-1502.
- Park, S.H., M. Aydin, A.Khatiwara, M.C. Dolan, D.F. Gilmore, J.L. Bouldin, S. Ahn, and S.C. Ricke. 2014. Application of current and emerging rapid detection methodologies for identification of *Salmonella* spp. in poultry and poultry products. *Food Microbiol.* 38:250-262.
- Piekarski, A.L., B-W. Kong, K. Lassiter, B.M. Hargis, and W.G. Bottje. 2014. Cell bioenergetics in leghorn male hepatoma cells and immortalized chicken liver cells in response to 4-hydroxy 2-nonenal-induced oxidative stress. *Poult. Sci.* 93:2870-2877.

- Prado-Rebolledo O. F. , L. J. García-Márquez , R. Macedo-Barra gán, J. García-Curiel, M. Sánchez-Barajas y G. Téllez. 2014. Effects of probiotic and stocking density on Nile tilapia fingerlings (*Oreochromis niloticus*) productive performance. *Revista Científica, FCV- LUZ / Vol. XXIV, N° 2, 180 - 184.*
- Prisby, R., T. Menezes, J. Campbell, T. Benson, E. Samraj, I. Pevzner, and R. F. Wideman, Jr. 2014. Kinetic examination of femoral bone modeling in broilers. *Poult. Sci.* 93:1122-1129.
- Rathinam, T., U. Gadde, H.D. Chapman. 2014. Sericaria lespedeza has no anticoccidial effect when included in the diet of chickens infected with three species of *Eimeria*. *Vet. Parasitol.* 202:265-269.
- Saengkerdsut, S. and S.C. Ricke. 2014. Ecology and characteristics of methanogenic archaea in animals and humans. *Crit. Revs. Microbiol.* 40:97–116.
- Saengkerdsut, S., A. Muthaiyan , J.M. Lingbeck, C.A. O’Byrne, P.G. Crandall, and S.C. Ricke. 2014. Identification and methionine analog tolerance of environmental bacterial isolates selected on methionine analog containing medium. *J. Environ. Sci. Health, Part B.* 49:290–298.
- Schilling , M. Wes, Y.V. Thaxton, C.Z. Alvarado. 2014. Slaughter-Line Operation, in: *Encyclopedia of Meat Sciences*, Academic Press.
- Shivaramaiah, C., J. R. Barta, X. Hernandez-Velasco, G. Téllez, and B. M. Hargis. 2014. Coccidiosis: recent advancements in the immunobiology of *Eimeria* species, preventive measures, and the importance of vaccination as a control tool against these Apicomplexan parasites. *Veterinary Medicine: Research & Reports* 5.
- Tellez, G. 2014. Prokaryotes versus Eukaryotes: Who is hosting whom? *Frontiers in Veterinary Science*. published: 14 October 2014 doi: 10.3389/fvets.2014.00003
- Tellez G., A. Laukova, J. D. Latorre, X. Hernandez-Velasco, B. M. Hargis and T. Callaway. 2014. Food-producing animals and their health in relation to human health. *Microbial Ecology in Health & Disease*, 25: 25876 - <http://dx.doi.org/10.3402/mehd.v25.25876>.
- Tellez, G., J. D. Latorre, V. A. Kuttappan, M. H. Kogut, A. Wolfenden, X. Hernandez-Velasco, B. M. Hargis, W. G. Bottje, L. R. Bielke, and O. B. Faulkner. 2014. Utilization of rye as energy source affects bacterial translocation, intestinal viscosity, microbiota composition, and bone mineralization in broiler chickens. *Frontiers in Genetics* 5:339.
- Wang, H., Y. Li and M. Slavik. 2014. Rapid Detection of *Campylobacter jejuni* in poultry products using quantum dots and nanobeads based fluorescent immunoassay. *International Journal of Poultry Science* 13(5):253-259.

- Wang, R., L.Z. Xu, and Y. Li. 2014. Bio-nanogate controlled enzymatic reaction for virus sensing. *Biosensors & Bioelectronics*. (in press) (accepted Aug. 27, 2014)
- Wang, H., C. Zhang, Y. Mi, and M. T. Kidd, 2014. Copper and lysine amino acid density responses in commercial poultry. *J. Appl. Poultry Res.* 23:470-477.
- Wideman, R. F. Jr., A. Al-Rubaye, D. Reynolds, D. Yoho, H. Lester, C. Spencer, J. M. Hughes, and I. Y. Pevzner. 2014. Bacterial chondronecrosis with osteomyelitis (BCO) in broilers: Influence of sires and straight-run vs. sex-separate rearing. *Poult. Sci.* 93:1-13.
- Wideman, R. F. Bacterial chondronecrosis with osteomyelitis and lameness in broilers: pathogenesis, experimental models, and preventative treatments. Chapter 5, pp 91-128 In: *Probiotics in Poultry Production*, edited by W. H. A. Abdelrahman, 5m Publishing Ltd. 2014.
- Wideman, R. F., A. Al-Rubaye, Y. M. Kwon, J. Blankenship, H. Lester, K. N. Mitchell, I. Y. Pevzner, T. Lohrmann, and J. Schleifer. 2014. Prophylactic administration of a combined prebiotic and probiotic, or therapeutic administration of enrofloxacin, to reduce the incidence of bacterial chondronecrosis with osteomyelitis in broilers. *Poult. Sci.* (*in press 9-29-2014*).
- Wideman, R. F., Jr., J. G. Mason, N. B. Anthony, and D. Cross. 2014. Plexogenic arteriopathy in broiler lungs: Evaluation of line, age and sex influences. *Poult. Sci.* (*in press 10-14-2014*)
- Xu, L.Z., X. Xu, H. Xiong, L.X. Chen and Y. Li. 2014. Rapid detection of vegetable cooking oils adulterated with inedible used oils using fluorescence quenching method with aqueous CTAB-coated quantum dots. *Sensors and Actuators B: Chemical* 203:697-704.
- Zhou, Z.Y., B. Packialakshmi, S.K. Makkar, S. Dridi, and N.C. Rath. 2014. Effect of butyrate on immune response of a chicken macrophage cell line. *Vet. Immunol. Immunopathol.* 2014 Sep 20, pii: S0165-2427(14)02219-0. Doi:10.1016/j.vetimm. 2014.09.002. {Epub ahead of print}, 2014.
- Zhou, L, J.P. Wang, D.J. Li, and Y. Li. 2014. An electrochemical aptasensor based on Au nanoparticles dotted graphene modified glassy carbon electrode for label-free detection of bisphenol A in milk samples. *Food Chem.* 162:34-40.



*Photo by Gary Shepard*